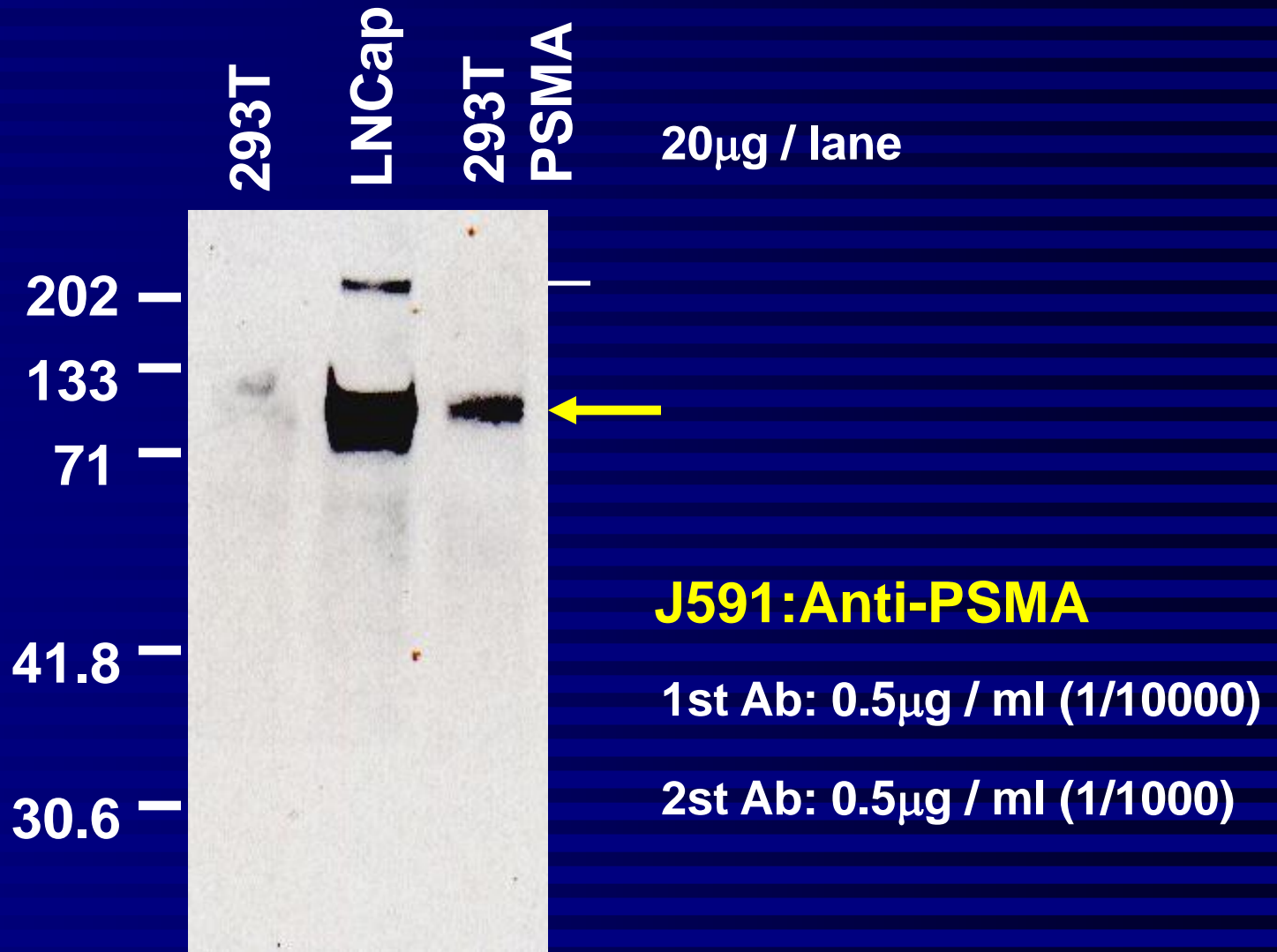


Western Blotting Analysis



2003/10/26 11:09

MAQVKL QES GGGLVQPGSSMKL SCVAS GFT FSNYWMNWRQSPKGL EWA EI RSQSNNFAT HYAESVKGRVI | SRDDSKSSVYLQMNNL
 10 20 30 40 50 60 70 80 90

415-1 MAQVKL QES GGGLVQPGSSMKL SCVAS GFT FSNYWMNWRQSPKGL EWA EI RSQSNNFAT HYAESVKGRVI | SRDDSKSSVYLQMNNL 90
 415-2 MAQVKL QES GGGLVQPGSSMKL SCVAS GFT FSNYWMNWRQSPKGL EWA EI RSQSNNFAT HYAESVKGRVI | SRDDSKSSVYLQMNNL 90
 415-3 MAQVKL QES GGGLVQPGSSMKL SCVAS GFT FSNYWMNWRQSPKGL EWA EI RSQSNNFAT HYAESVKGRVI | SRDDSKSSVYLQMNNL 90
 415-4 con MAQVQL QES GGGLVQPGSSMKL SCVAS GFT FSNYWMNWRQSPKGL EWA EI RSQSNNFAT HYAESVKGRVI | SRDDSKSSVYLQMNNL 90
 415-5 MAQVQL QES GGGLVQPGSSMKL SCVAS GFT FSNYWMNWRQSPKGL EWA EI RSQSNNFAT HYAESVKGRVI | SRDDSKSSVYLQMNNL 90
 415-6 MAQVKL QQL RGGGLVQPGSSMKL SCVAS GFT FSNYWMNWRQSPKGL EWA EI RSQSNNFAT HYAESVKGRVI | SRDDSKSSVYLQMNNL 90
 415-8 MAQVQL QES GGGLVQPGSSMKL SCVAS GFT FSNYWMNWRQSPKGL EWA EI RSQSNNFAT HYAESVKGRVI | SRDDSKSSVYLQMNNL 90
 415-9 MAQVKL QQS GGGLVQPGSSMKL SCVAS GFT FSNYWMNWRQSPKGL EWA EI RSQSNNFAT HYAESVKGRVI | SRDDSKSSVYLQMNNL 90

RAE DTGI YYCTRRWNNFWGGGT T V T V S SGGGGS GGGGSGGGGSDI EL TQSPA I MSA SPGERV TMT CSA SSSI RYI YWYQOKPGSSPRLLI
 100 110 120 130 140 150 160 170 180

415-1 RAE DTGI YYCTRRWNNFWGGGT T V T V S SGGGGS GRGGGSGGGGSDI EL TQSPA I MSA SPGERV TMT CSA SSSI RYI YWYQOKPGSSPRLLI 180
 415-2 RAE DTGI YYCTRRWNNFWGGGT T V T V S SGGGGS GGGGSGGGGSDI EL TQSPA I MSA SPGERV TMT CSA SSSI RYI YWYQOKPGSSPRLLI 180
 415-3 RAE DTGI YYCTRRWNNFWGGGT T V T V S SGGGGS GGGGSGGGGSDI EL TQSPA I MSA SPGERV TMT CSA SSSI RYI YWYQOKPGSSPRLLI 180
 415-4 con RAE DTGI YYCTRRWNNFWGGGT T V T V S SGGGGS GGGGSGGGGSDI EL TQSPA I MSA SPGERV TMT CSA SSSI RYI YWYQOKPGSSPRLLI 180
 415-5 RAE DTGI YYCTRRWNNFWGGGT T V T V S SGGGGS GGGGSGGGGSDI EL TQSPA I MSA SPGERV TMT CSA SSSI RYI YWYQOKPGSSPRLLI 180
 415-6 RAE DTGI YYCTRRWNNFWGGGT T V T V S SGGGGS GGGGSGGGGSDI EL TQSPA I MSA SPGERV TMT CSA SSSI RYI YWYQOKPGSSPRLLI 180
 415-8 RAE DTGI YYCTRRWNNFWGGGT T V T V S SGGGGS GGGGSGGGGSDI EL TQSPA I MSA SPGERV TMT CSA SSSI RYI YWYQOKPGSSPRLLI 180
 415-9 RAE DTGI YYCTRRWNNFWGGGT T V T V S SGGGGS GGGGSGGGGSDI EL TQSPA I MSA SPGERV TMT CSA SSSI RYI YWYQOKPGSSPRLLI 180

YDT SNVAPGVPF RFS GSGSGT SYSLT I NRMEAE DAAT YYCQEWGYPYTF GGGTKLEI KR
 190 200 210 220 230 240

415-1 YDT SNVAPGVPF RFS GSGSGT SYSLT I NRMEAE DAAT YYCQEWGYPYTF GGGTKLEI KR 240
 415-2 YDT SNVAPGVPF RFS GSGSGT SYSLT I NRMEAE DAAT YYCQEWGYPYTF GGGTKLEI KR 240
 415-3 YDT SNVAPGVPF RFS GSGSGT SYSLT I NRMEAE DAAT YYCQEWGYPYTF GGGTKLEI KR 240
 415-4 con YDT SNVAPGVPF RFS GSGSGT SYSLT I NRMEAE DAAT YYCQEWGYPYTF GGGTKLEI KR 240
 415-5 YDT SNVAPGVPF RFS GSGSGT SYSLT I NRMEAE DAAT YYCQEWGYPYTF GGGTKLEI KR 240
 415-6 YDT SNVAPGVPF RFS GSGSGT SYSLT I NRMEAE DAAT YYCQEWGYPYTF GGGTKLEI KR 240
 415-8 YDT SNVAPGVPF RFS GSGSGT SYSLT I NRMEAE DAAT YYCQEWGYPYTF GGGTKLEI KR 240
 415-9 YDT SNVAPGVPF RFS GSGSGT SYSLT I NRMEAE DAAT YYCQEWGYPYTF GGGTKLEI KR 240

20031N6a62f 11:08



MAQVQL QESGPELVKPGT SVRI SCKTSGYTFTEYT I HWKQSHGKSL EWM GNI NPNNGGTTYNQKFEDKATLTVDKSSSTAYMELRSLTS

20 20 30 40 50 60 70 80 90

591-1 MAQVQL QESGTEVVKPGVSVKLSCKASGYI FTSYDI DWRQTPEQGLEW GW FPEGGST EYNEKFKGRATLSVDKSSSTAYMELTRLTS 90

591-2 MAQVKL QESGTEVVKPGA SVKLSCKASGYI FTSYDI DWRQTPEQGLEW GW FPEGGST EYNEKFKGRATLSVDKSSSTAYMELTRLTS 90

591-3 MAQVQL QESGPELVKPGT SVRI SCKTSGYTFTEYT I HWKQSHGKSL XXXX- - - - - 52


591-4 MAQVKL QESGPELVKPGT SVRI SCKTSGYTFTEYT I HWKQSHGKSL EWM GNI NPNNGGTTYNQKFEDKATLTVDKSSSTAYMELRSLTS 90

591-5 - - - - - PELVKPGT SVRI SCKTSGYTF XXXX- - - - - 27

591-6 MAQVQL QESGPELVKPGT SVRI SCKTSGYTFTEYT I HWKQSHGKSL EWM GNI NPNNGGTTYNQKFEDKATLTVDKSSSTAYMELRSLTS 90

591-7 MAQVQL QESGPELVKPGT SVRI SCKTSGYTFTEYT I HWKQSHGKSL EWM GNI NPNNGGTTYNQKFEDKATLTVDKSSSTAYMELRSLTS 90

591-8 - - - - - PELVKPGT SVRI SCKTSGYTFTEYT I HWKQSHGKSL EWM GNI NPNNGGTTYNQKFEDKATLTVDKSSSTAYMELRSLTS 80



EDSAVYYCAAG - - - WNF DYWGQGT TVTVS SGGGGS GGGGSGGGGSDI EL TQSPA I - - MSAS PGERVT MTC SASSSI RYI YW - YQQKPG

300 120 120 130 140 150 160 170 180

591-1 EDSAVYFCARGDYRRYFDLWGQGT TVTVS SGGGGS GGGGSGGGGSDI EL TQXXX- - VSAS PGERVT MTC SASSSI RYI YW - YQQKPG 178

591-2 EDSAVYFCARGDYRRYFDLWGQGT TVTVS SGGGGS GGGGSGGGGSDI VL TQSPA I - - MSAS PGERVT MTC SASSSI RYI YW - YQQKPG 178

591-3 - - - - - YYCAAG - - - WNF DYWGQGT TVTVS SGGGGS GGGGSGGGGSDI VL TQXXXAI MSAS PGERVT MTC SASSSI RYI YW - YQQKPG 130

591-4 EDSAVYYCAAG - - - WNF DYWGQGT TVTVS SGGGGS GGGGSGGGGSDI EL TQSPA I - - MSAS PGERVT MTC SASSSI RYI YW - YQQKPG 172

591-5 - - - - - AG - - - WNF DYWGQGT TVTVS SGGGGS GGGGSGGGGSDI EL TQSPA I - - MSAS PGERVT MTC SASSSI RYI YW - YQQKPG 99

591-6 EDSAVYYCAAG - - - WNF DYWGQGT TVTVS XXXX- - - - - I YGA - - - 128

591-7 EDSAVYYCAAG - - - WNF DYWGQGT TVTVS SGGGGS SGGG - - - - - WMMXXX - - - 135

591-8 EDSAVYYCAAG - - - WNF DYWGQGT TVTVS SGGGGS GGGGSGGGGSDI EL TQSPA I - - MSAS PGERVT MTC SASSSI RYI YW - YQQKPG 182



SSPRLI YDTSNVAPGVPFRFSGSGSGT SYSLTI NRMEAEDAATYYCQEWGSGYPYTFGGGKLEIKR

190 200 210 220 230 240

591-1 SSPRLI YDTSNVAPGVPFRFSGSGSGT SYSLTI NRMEAEDAATYYCQEWGSGYPYTFGGGKLEIKR 243

591-2 SSPRLI YDTSNVAPGVPFRFSGSGSGT SYSLTI NRMEAEDAATYYCQEWGSGYPYTFGGGKLEIKR 243

591-3 SSPRLI YDTSNVAPGVPFRVSGSGSGT SYSLTI NRMEAEDAATYYCQEWGSGYPYTFGGGKLEIKR 197

591-4 SSPRLI YDTSNVAPGVPFRFSGSGSGT SYSLTI NRMEAEDAATYYCQEWGSGYPYTFGGGKLEIKR 239

591-5 SSPRLI YDTSNVAPGVPFRFSGSGSGT SYSLTI NRMEAEDAATYYCQEWGSGYPYTFGGGKLEIKR 166

591-6 - - - - - SNRYT GVPDRFTGSGSAT DFTLTI SSVQAEDLADYHCGQGY SYPYTFGGGKLEIKR 182

591-7 - - - - - IYGASNRYT GVPDRFTGSGSAT DFTLTI SSVQAEDLADYHCGQGY SYPYTFGGGKLEIKR 195

591-8 SSPRLI YDTSNVAPGVPFRFSGSGSGT SYSLTI NRMEAEDAATYYCQEWGSGYPYTFGGGKLEIKR 229

Western Blotting Analysis

